



AQUASEAL

QATAR FACTORY W.L.L

“Growth Through Innovation”



TILING PRODUCTS

WATERPROOFING PRODUCTS

FLOORING & COATING PRODUCTS

CONCRETE REPAIR & PROTECTION PRODUCTS

INDUSTRIAL GROUTING & ANCHORING PRODUCTS

SEALANTS & BONDING AGENTS

CONSTRUCTION PRODUCTS

RENDER & PLASTER PRODUCTS

DURABUILD[™]

www.aquaseal-qatar.com



AQUASEAL
QATAR FACTORY W.L.L

Manufacturer of **DURABUILD™**

INDEX



AQUASEAL
QATAR FACTORY W.L.L.

• Index	01
• General Information	02
• Introduction	03
• Vision	04
• Quality Policy	05
• Environmental Policy	06
• Health & Safety Policy	07
• Certifications	08
• Product Range	11
• International System of Measurement	41

GENERAL INFORMATION



AQUASEAL
QATAR FACTORY W.L.L.

Registered Name:	Aquaseal Qatar Factory W.L.L
Registered Factory:	New Industrial Area Building No: 121 Zone No: 21 Street N Doha Qatar
Contact Details:	Tel: +974 4467-8826 Fax: +974 4450-6819 P.O. Box 201019 Email: info@aquaseal-qatar.com
Commercial Registration:	49465
Type of Organization:	Sole Ownership
Senior Executives:	Ghassan Awadeh General Manager

INTRODUCTION



AQUASEAL
QATAR FACTORY W.L.L.

AQUASEAL is manufacturing construction chemicals for all phases of construction, from foundations to finishes, under our product brand name, **DURABUILD**. The company produces a diverse range of products including Tiling Products, Waterproofing Products; Flooring & Coating Products; Concrete Repair & Protection Products; Industrial Grouting & Anchoring Products; Sealants & Bonding Agents; Construction Products; and Render & Plaster Products. These products are suitable for new-built and retrofit projects in both the commercial and residential sectors.



Aquaseal's motto is "Growth Through Innovation" and we believe that it is vital to not only provide high quality products, but also to have the ability to respond to a customer's unique needs and requirements.



AQUASEAL has the capacity to handle multi-container orders but is still small enough to provide individualized assistance with special projects and requirements. The company's R&D Department is always available to customize a product to meet the needs of the customer, and work together to produce the best and highest quality product to suit a particular project or environment, all in a timely manner.

All of our products are tested and conform to International standards. In addition, **AQUASEAL** offers "private label" on some of the manufactured products. As part of the company's expansion program, a state-of-the-art manufacturing plant has been successfully built in Qatar, and is now fully operational. This plant is able to supply the rapidly expanding construction market in Qatar as well as the other regions of the Middle East.



VISION



AQUASEAL
QATAR FACTORY W.L.L.

We always strive to make the best construction products and we believe that it is vital not only to provide high quality products but also to have the ability to respond to the customers' unique needs and requirements.

Our motto is "Growth Through Innovation". We believe in the simple not the complex. We believe that we need to own and control the primary technologies behind the products that we make, and participate only in markets where we can make a significant contribution.





We are committed to manufacture the best in construction chemicals that are used in all phases of construction. We aim to implement and maintain a Quality Management System in accordance with ISO 9001:2015 standards and to meet all the requirements to achieve excellent products and services.

OBJECTIVES

- Continual improvement through efficient and effective planning, operations, and use of resources.
- Use the best international practices in manufacturing our products
- Communicate our policy among our employees and interested parties.
- Maintain customer satisfaction and exceed customer expectations
- To create and maintain a culture of quality within the group
- To ensure that all our employees are trained in quality assurance and that this training is ongoing at all levels.
- To continually review, improve and implement quality control and best practice procedures.

AQUASEAL supports its clients and customers through offering:

QUALITY PRODUCT RANGE

We offer a wide range of quality construction chemicals for all phases of construction from foundation to finishes, under our product brand named DURABUILD, meeting the highest international quality standard.

SALES SUPPORT TEAM

Our professional sales executives who are eager to support your requirement and inquiries to ensure that you receive the right product at the right time for the right price.

COMPLIMENTARY DELIVERY SERVICES

With extensive fleet of trucks and professional delivery staff assuring prompt delivery.

ENVIRONMENTAL POLICY



AQUASEAL
QATAR FACTORY W.L.L.

We shall have and maintain a system that will conform to the ISO 14001: 2015, by ensuring a good environmental performance in all our business operations. We will provide the necessary organization, commitment and training to fulfil this obligation by monitoring and improving environmental performance, pollution prevention and environmental protection.

To Ensure Compliance, we shall;

- Minimize waste and emissions from our production and other processes where possible. Prevention of pollution will be a key point of our operation.
- We will quickly mandate any observed non-compliances to reduce potential adverse environmental impacts.
- Strive to comply with all current environmental, legal, and other regulations.
- Evaluate our environmental performance by monitoring emissions, waste, electrical consumption, and raw material usage through frequent environmental audits.
- Being committed to maintaining effective communication systems on environmental matters through training and improved awareness.
- Incorporating environmental responsibility into all business operations by planning environmental protection, reviewing and developing policy, by setting targets and reviewing and auditing performance.
- Implementing a systematic waste minimization programme to achieve objectives and targets to reduce waste.
- Pursuing continuous improvement in environmental performance, where reasonably practicable, by setting objectives and targets, especially in reducing energy and water consumption and improving solid and liquid waste management methods.

All employees have responsibilities for policy implementation by participating and contributing to its success through their actions and suggestions.

HEALTH & SAFETY POLICY



AQUASEAL
QATAR FACTORY W.L.L.

We are committed to comply with OHSAS 18001:2007 Health & Safety Management System, ensuring all work activities are carried out safely, with all possible measures taken to remove and reduce risks to the health, safety and welfare of our workers, authorized visitors, and anyone else who may be affected by our operations.

To ensure compliance, we shall;

- Provide a safe working environment, plant, tools and materials in safe condition to our employees and visitors.
- Ensure information, instructions, training and supervision is provided to every level that is necessary to ensure each worker is safe from injury and risk to health and safety in the workplace.
- Provide adequate facilities for the welfare of our workers both at work place and off site.
- Conduct awareness among workers that each one is responsible for ensuring their own personal health and safety, (such as following safe work procedures, wearing personal protective equipment etc.) and that of others in the workplace.
- Continually improve our systems and procedures and look for areas in which we can improve our performance through effective safety management.
- We shall maintain a safe work place and ensure that our training programs prepare our employee to perform their work on the safest and best possible way.


This policy applies to all business operations and functions, including those situations where workers are required to work off-site.






CERTIFICATE

This Certificate is granted to the organization


AQUASEAL
AQUASEAL QATAR FACTORY W.L.L
Street No: 20, Zone No: 81, Building No: 101,
New Industrial Area, P.O Box: 201019,
Doha, Qatar

Has been assessed and found to be in accordance with the standard requirements,



ISO 9001:2015

Quality Management System

For the full scope of certification


Manufacturing and Trading of Construction Chemicals.

Certificate No	: ICAS180397
Certificate Date	: September 20, 2018
Issue Date	: September 20, 2018
Valid Until	: September 20, 2019
Registration No	: 101Q0397
Surveillance Audit	: 1 st Year <input type="checkbox"/> 2 nd Year <input type="checkbox"/>




Signed on behalf of ICA By

President



AIAO-BAR
★★★★★
ACCREDITED
USA
AIAO-BAR-Q021715-1

The certificate may be rendered invalid if there is any lack of fulfillment of conditions set out in the rules of ICA Certification Body for compliance with ISO 17021:2011 'Conformity Assessment'.
Email: president@ica-cb.com Website: www.ica-cb.com







CERTIFICATE

This Certificate is granted to the organization


AQUASEAL
AQUASEAL QATAR FACTORY W.L.L
Street No: 20, Zone No: 81, Building No: 101,
New Industrial Area, P.O Box: 201019,
Doha, Qatar

Has been assessed and found to be in accordance with the standard requirements,



ISO 14001:2015

Environmental Management System

For the full scope of certification

Manufacturing and Trading of Construction Chemicals.

Certificate No	: ICAS180398
Certificate Date	: September 20, 2018
Issue Date	: September 20, 2018
Valid Until	: September 20, 2019
Registration No	: 101Q0398
Surveillance Audit	: 1 st Year <input type="checkbox"/> 2 nd Year <input type="checkbox"/>



Signed on behalf of ICA By

President



AIAO-BAR
★★★★★
ACCREDITED
USA
AIAO-BAR-Q021715-1

The certificate may be rendered invalid if there is any lack of fulfillment of conditions set out in the rules of ICA Certification Body for compliance with ISO 17021:2011 'Conformity Assessment'.
Email: president@ica-cb.com Website: www.ica-cb.com





CERTIFICATE



This Certificate is granted to the organization



AQUASEAL

AQUASEAL QATAR FACTORY W.L.L

Street No: 20, Zone No: 81, Building No: 101,
New Industrial Area, P.O Box: 201019,
Doha, Qatar

Has been assessed and found to be in accordance with the standard requirements,

OHSAS 18001:2007

Occupational Health and Safety Assessment Series

For the full scope of certification

Manufacturing and Trading of Construction Chemicals.

Certificate No : ICAS180399
Certificate Date : September 20, 2018
Issue Date : September 20, 2018
Valid Until : September 20, 2019
Registration No : 101Q0399
Surveillance Audit : 1st Year 2nd Year



Signed on behalf of ICA By

President



The certificate may be rendered invalid if there is any lack of fulfillment of conditions set out in the rules of ICA
Certification Body for compliance with ISO 17021:2011 'Conformity Assessment'.
Email: president@ica-cb.com Website: www.ica-cb.com





PRODUCT RANGE

TILING PRODUCTS

DURA TILE PM
DURA TILE SC
DURA TILE NS
DURA TILE GROUT

DURA TILE GROUT SC
DURA JOINT LOCK SAND
DURA FORTIFIED MORTAR BED
DURA TILE EP 500

WATERPROOFING PRODUCTS

DURA FLEX BB
DURA PROOF
DURA SEAL SILOXANE

DURA BITUMEN D-41
DURA SOL EMULSION 3510

FLOORING & COATING PRODUCTS

DURA PRIME EP1
DURA PRIME EP2
DURA FLOOR HARDNER
DURA TOP CSU-30 PLUS
DURA COAT EP 200
DURA COAT EP 200-CLEAR
DURA POXY EP 300

DURA EPOXY SCREED
DURA FLOOR SEAL
DURA QUARTZ # 03
DURA PVA PRIMER
DURA MATT
DURA ANTI-CARBONATION PAINT

CONCRETE REPAIR & PROTECTION PRODUCTS

DURA CRETE MC-5
DURA CRETE MC-10
DURA CRETE ST
DURA CRETE STF
DURA STOP
DURA CONCRETE CLEANER

DURA PRIME ZR
DURA INJECT EPLV
DURA EPOXY COMPOUND
DURA GUNIT FR
DURA CURE A

INDUSTRIAL GROUTING & ANCHORING PRODUCTS

DURA GROUT GP-P
DURA GROUT F

DURA MIX 324

SEALANTS & BONDING AGENTS

DURA SEAL PS
DURA SEAL A
DURA BOND PVA

DURA BOND SBR
DURA BOND EP

CONSTRUCTION PRODUCTS

DURA ALL PURPOSE PUTTY
DURA PRIME PS
DURA STUCCO FILLER

DURA CURBSTONE PAINT
DURA SOLVENT #1

RENDER & PLASTER PRODUCTS

DURA PLAST HSP-100
DURA PLAST HSP-200
DURA PLAST HSP-C

DURA PLAST
DURA PLAST FR
DURA PLAST FC

TILING PRODUCTS



**DURA TILE PM
DURA TILE SC
DURA TILE NS
DURA TILE GROUT**

**DURA TILE GROUT SC
DURA JOINT LOCK SAND
DURA FORTIFIED MORTAR BED
DURA TILE EP 500**

TILING PRODUCTS



DURA TILE PM

One Component, polymer modified, tile adhesive for permanently fixing ceramic tiles etc. Available in white or grey colour, and only requires the addition of clean water on site. It has been specially formulated for the tropical conditions of the Middle East. Conforms to BSEN 12004, Class C1
Available in 25 Kg packing.



DURA TILE SC

High quality, waterproof tile adhesive for permanently fixing ceramic tiles etc. The product is a cementitious powder, available in white and grey colour, and only requires the addition of clean water on site. It has been specially formulated for the tropical conditions of the Middle East and will tolerate wet or damp conditions. Conforms to BSEN 12004, Class C1TE
Available in 25 Kg packing.



DURA TILE NS

High quality, polymer modified, water resistant cementitious tile adhesive for rapid setting of heavy stones and tiles. Available in white colour. Conforms to BSEN 12004, Class C2TE
Available in 25 Kg packing.



TILING PRODUCTS



DURA TILE GROUT

Is a smooth, thixotropic, non-slump grout that is suitable for indoor use. The product is a blend of cements and specially selected fillers and synthetic organic polymers. Available in a range of colors.

Available in 20 Kg packing.

DURA TILE GROUT SC

Smooth, thixotropic, non-slump grout that is suitable for use in submerged conditions. It comes in a range of colors, requires only on-site addition of water. It blends easily to produce a smooth creamy paste. Tile grout SC is resistant to water and fungal growth. Can be used for water tanks, swimming pools, kitchens, and bathrooms.

Available in 20 Kg packing.



DURA JOINT LOCK SAND

Is a high-tech mix of graded sand and binder, specially formulated for the filling of joints when installing pavers or slabs, or when replacing existing joints. Unlike conventional sand, it stays in place and remains stable.

Available in 25 Kg packing.

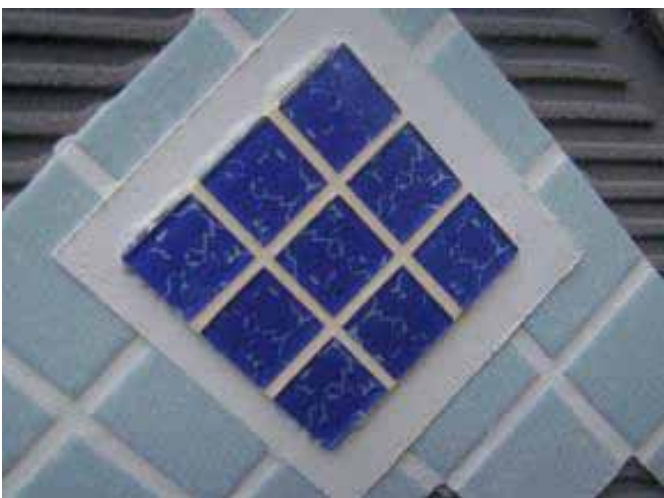


TILING PRODUCTS



DURA FORTIFIED MORTAR BED

A single component, fiber reinforced, polymer modified cementitious thick bed mortar. It is supplied as a ready to use dry powder that only needs addition of clean water on site to produce a thick mortar. It can be applied in thicknesses of 10mm and 50mm depending on application. Available in 25 Kg packing.



DURA TILE EP 500

Is a three component 100% solid, water and chemical resistant epoxy tile adhesive & grout. It is preweighed set consisting of epoxy resin hardener and selected fillers that when mixed together produce a thixotropic paste suitable for permanent fixing of all types of ceramic tiles and stones in vertical and horizontal applications. Available in 11 Kg packing.

WATERPROOFING PRODUCTS



**DURA FLEX BB
DURA PROOF
DURA SEAL SILOXANE**

**DURA BITUMEN D-41
DURA SOL EMULSION 3510**

WATERPROOFING PRODUCTS



DURA FLEX BB

Two component, Cement and acrylic modified coating that requires only on site mixing to form the ideal product to waterproof and resurface concrete, masonry, and most other construction materials. The product is widely used for water tightness works, protection of concrete, waterproofing of masonry structures, etc. Major applications are kitchens, bathrooms, drinking water tanks, showers, locker rooms etc.

Available in 20 Kg packing.



DURA PROOF

One component acrylic water proof, applied as viscous liquid and upon drying, provides a highly flexible waterproof coating for roofs, kitchens, washrooms, balconies etc., and it has excellent weathering characteristics. Available in white and grey colours.

Available in 20 Kg packing.



WATERPROOFING PRODUCTS



DURA SEAL SILOXANE

One component solvent based silane siloxane water repellent that comes in liquid form and after application gives a tack free, invisible water resistant sealer that preserves the natural look of the substrate. Treated surfaces are water proof and easy to clean. Available in 20 Ltr & 200 Ltr packing.



DURA BITUMEN D-41

Solvent based bitumen primer suitable for use with asphalt in damp proofing and water proofing below and above ground level for application to concrete and masonry surfaces. Conforms to ASTM D-41. Available in 180 Ltr packing.

DURA SOL EMULSION 3510

Anionic latex modified bitumen emulsion. It is dark brown in color, dries to form a tough black membrane. The product also contains a quantity of bio-acid to inhibit the growth of bacteria and mold both in the product itself and subsequent to application, these properties impart excellent durability and waterproofing characteristics.

Available in 15 Kg & 180 Kg packing.



FLOORING & COATING PRODUCTS



DURA PRIME EP1
DURA PRIME EP2
DURA FLOOR HARDNER
DURA TOP CSU-30 PLUS
DURA COAT EP 200
DURA COAT EP 200 - CLEAR
DURA POXY EP 300

DURA EPOXY SCREED
DURA FLOOR SEAL
DURA QUARTZ # 03
DURA PVA PRIMER
DURA MATT
DURA ANTI-CARBONATION PAINT

FLOORING & COATING PRODUCTS



DURA PRIME EP1

Two component epoxy based primer sealer system that seals the substrate to prevent air release from concrete that causes the forming of air bubbles and pinholes. It is also used as sealant to aid in adhesion.

Available in 1 Kg & 3 Kg packing.



DURA PRIME EP2

Two component solvent based polyamide cured, epoxy based primer system that seals the substrate to prevent air release from the concrete rising and forming bubbles and pinholes on surface of subsequent coating or topping. It also provides a chemical bridge for non-porous surfaces like glass, steel, metal to aid in adhesion.

Available in 15 Kg packing.

DURA FLOOR HARDNER

Dry shake mineral aggregates concrete surface hardener. It is ready-to-use non-metallic product for hardening concrete floors.

Available in 25 Kg packing.



FLOORING & COATING PRODUCTS



DURA TOP CSU-30 PLUS

Single component, self-smoothing cementitious under layment and self levelling compound. Available in grey colour.

Available in 25 Kg packing.



DURA COAT EP 200

Multi-component epoxy coating system designed for application at a total thicknesses between approximately 400µm - 600µm on basement and ground floor car parks, or on intermediate traffic decks exhibiting little or no structural movement. DURA COAT EP200 may be applied to produce a durable medium or heavy duty profiled finish. Available in a range of colors.

Available in 24 Kg packing.

DURA COAT EP 200 - CLEAR

Multi-component solvent free, clear epoxy self levelling flooring system designed for application at a total thicknesses between 0.5 mm - 4 mm. High chemical and abrasion resistant flooring system used as a top protective layer of 3D and decorative floors.

Available in 5 Kg & 20 Kg packing.



FLOORING & COATING PRODUCTS



DURA POXY EP 300

A multifunctional solvent free epoxy self-levelling coating, developed to be applied at thicknesses of 0.5mm - 3mm Available in 24 Kg packing.



DURA EPOXY SCREED

Three-component, solvent-free, amine cured, silica-filled, trowel able epoxy mortar system with high chemical and abrasion resistance for the protection of concrete and similar substrates and for flooring application. Available in 40 Kg packing.



DURA FLOOR SEAL

Colourless, odorless blend of active sodium silicate and silicate chemicals to strengthen, harden, densify and dustproof concrete and masonry floors. DURA FLOOR SEAL penetrates into the concrete, sealing the capillaries and pores and produces a hard mineral film that is resistant to damage caused by water, chemicals and abrasion. DURA FLOOR SEAL is ideal for industrial, warehousing, manufacturing and food service/processing environments. Available in 20 Kg & 200 Kg packing.



DURA QUARTZ # 03

Fine graded Silica quartz, for antiskid application of epoxy flooring system. Available in 25 Kg packing.



FLOORING & COATING PRODUCTS



DURA PVA PRIMER

Is specially formulated for the needs of the Pro painter. DURA PVA PRIMER effectively seals porous surfaces preparing them for any architectural topcoat. It can also be used over bare or previously painted drywall, plaster, wood, and masonry. Available in 5 Kg & 20 Kg packing.



DURA MATT

Is a top quality, durable acrylic Emulsion paint for interior and exterior use. Dura Matt has good weather resistance and washability. Available in 20 Kg packing.

DURA ANTI-CARBONATION PAINT

A waterborne, silicon resin modified acrylic emulsion based on alkali resistant anti-carbonation top coat. The product allows water vapors from the substrate to pass through the paint film and possess water repellent property, low dirt pickup and easy to clean. Available in 20 Kg packing.



CONCRETE REPAIR & PROTECTION PRODUCTS



DURA CRETE MC-5
DURA CRETE MC-10
DURA CRETE ST
DURA CRETE STF
DURA PRIME ZR
DURA STOP

DURA CONCRETE CLEANER
DURA INJECT EPLV
DURA EPOXY COMPOUND
DURA GUNIT FR
DURA CURE A

CONCRETE REPAIR & PROTECTION PRODUCTS



DURA CRETE MC-5

A single component high strength, polymer modified, shrinkage controlled, free flowing micro-concrete for a mass fill in of all structural repairs, suitable for 30mm - 150mm thickness. Available in 25 Kg packing.



DURA CRETE MC-10

A single component polymer modified, shrinkage controlled, free flowing micro-concrete for a mass fill in of all structural repairs, suitable for 50mm - 200mm thickness. Available in 25 Kg packing.



DURA CRETE ST

Single component, shrinkage controlled, polymer modified structural grade cementitious repair mortar, available in grey powder, needs only addition of clean water on site. Trowelable and suitable for hand placed repair where significant load bearing is required. Available in 25 Kg packing.



CONCRETE REPAIR & PROTECTION PRODUCTS



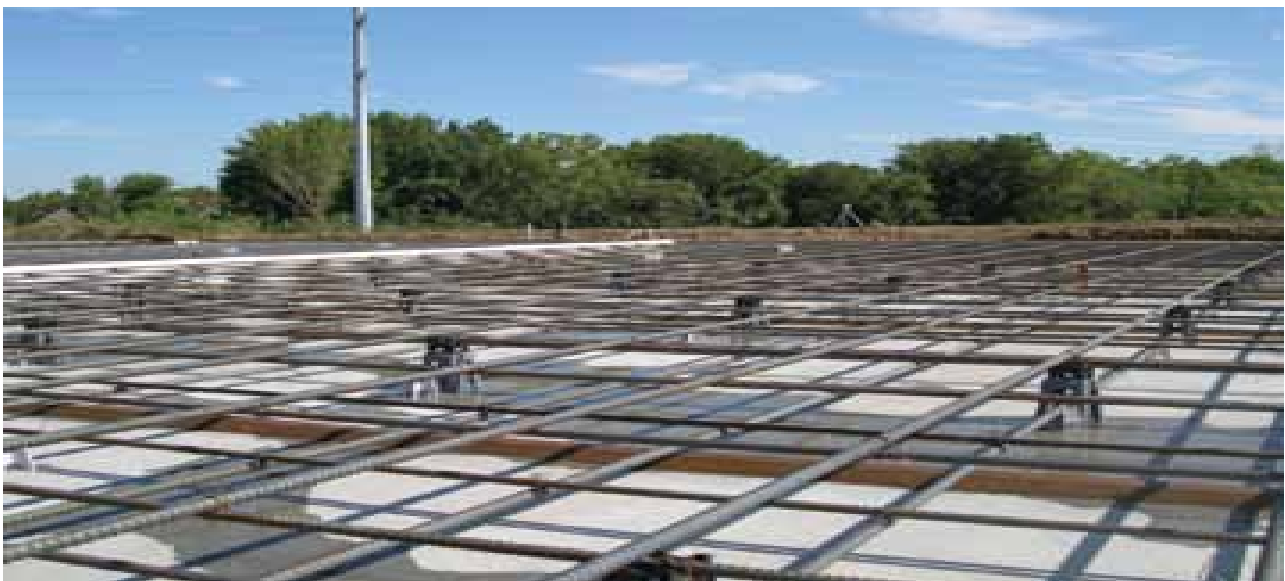
DURA CRETE STF

A fiber reinforced structural grade, single component, shrinkage controlled, polymer modified cementitious repair mortar. The product is supplied as ready to use dry powder that only needs the addition of clean water on site to produce a repair mortar. Trowelable and also suitable for hand placed repairs where significant load bearing is required. DURA-CRETE STF can be applied in thicknesses between 5mm - 100mm depending on the application. Available in 25 Kg packing.



DURA PRIME ZR

Two component, solvent borne zinc rich epoxy primer, providing corrosion protection to steel surfaces. The product is a thick grey liquid of paint-like consistency, and is recommended for use in areas like sea side and highly humid environment. Available in 1 Kg packing.



CONCRETE REPAIR & PROTECTION PRODUCTS



DURA STOP

Single component, fast setting water stopping mortar designed for emergency plugging and patching of concrete in wet areas within 60 seconds.

Available in 25 Kg packing.



DURA CONCRETE CLEANER

Is a strong acidic cleaner and degreasing solution for use on tiles, concrete and concrete products.

Available in 5 Kg & 20 Kg packing.



CONCRETE REPAIR & PROTECTION PRODUCTS



DURA INJECT EPLV

Two-part, solvent free, low viscosity, epoxy resin for sealing cracks using the injection method. It can be applied to dry or wet surfaces to provide water resistance. It has excellent adhesion to concrete, masonry or brick.

Available in 1 Kg & 3 Kg packing.



DURA EPOXY COMPOUND

Two component Solvent free epoxy putty that is a high strength, non-shrink epoxy bedding, filling and repair mortar. The product is resistant to common chemicals. It may be applied as a basecoat and repair product for floors that will be finished with modern coatings.

Available in 8 Kg packing.



CONCRETE REPAIR & PROTECTION PRODUCTS



DURA GUNIT FR

Is supplied as a premeasured bagged powder. The product is a blend of Portland cement, PP Fibers, Silica fume, graded fillers and chemical additives. It is a one component un-accelerated cementitious silica fume based Gunit mortar that is suitable for use in hot and tropical climate conditions. It can be applied from 15 mm to 80 mm. Available in 25 Kg packing.



DURA CURE A

Is a non-hazardous, water based, low viscosity acrylic emulsion concrete curing compound that can be applied by spraying onto freshly poured concrete. Supplied as a one-part emulsion that is ready to use on site, the product forms a continuous, non-penetrating coating that dries to a clear film. This protective coating prevents rapid



evaporation of water from the fresh concrete ensuring uniform hydration, increased concrete durability, and reduced shrinkage cracks on the surface. It is ideal for large areas of exposed concrete where an improved finish is necessary. A white pigmented version of the product is also available and this product dries to a white film which is designed to reduce solar temperature gain. Available in 200 Kg & 1000 Kg packing.

INDUSTRIAL GROUTING & ANCHORING PRODUCTS



**DURA GROUT GP-P
DURA GROUT F**

DURA MIX 324

INDUSTRIAL GROUTING & ANCHORING PRODUCTS



DURA GROUT GP-P

Flowable, non shrink cementitious precision grout for gap thicknesses of 10mm - 100mm. Available in 25 Kg packing.



DURA GROUT F

Free Flowing, high strength, non-shrink cementitious anchoring grout. Suitable For gap thicknesses of 10mm - 100mm. Available in 25 Kg packing.



DURA MIX 324

Dura Mix 324 is three-component, non shrink, solvent-free, amine cured, silica-filled flowable epoxy mortar. Available in 10 Kg packing.



SEALANTS & BONDING AGENTS



**DURA SEAL PS
DURA SEAL A
DURA BOND PVA**

**DURA BOND SBR
DURA BOND EP**

SEALANTS & BONDING AGENTS



DURA SEAL PS

Two-part polysulphide based sealant designed to be used as a flexible seal for moderate movement and control joints between 5mm and 50mm in width. Available in either a pourable or gun grade, the product has excellent adhesion properties on substrates such as primed concrete, stone, metals, glass, etc. and to all materials commonly employed in building and construction work. It is particularly suitable for application in areas where access for subsequent maintenance will be difficult and the risk of movement failure needs to be minimized.

Available in 2.8 Ltr packing.



DURA SEAL A

Is a high performance, one component acrylic sealant. It exhibits good skin formation time, used as a cavity filling, compatible and gives good adhesion with most of construction materials like Aluminum, wood, concrete, masonry walls, PVC and iron.

Available in 5 Kg & 20 Kg packing.



SEALANTS & BONDING AGENTS



DURA BOND PVA

Multi function PVA bonding agent that may be used as a sealer, primer and an admix for concrete and also a bonding agent for papers, cement screeds. Suitable for most surfaces such as concrete, terrazzo, stone, block etc. Available in 5 Kg & 20 Kg & 240 Kg packing.



DURA BOND SBR

High performance SBR bonding agent, a multi purpose water resistant primer, sealer, bonding agent and admixture for cementitious systems, compatible with cement screeds, terrazzo, stone, block etc. Available in 5 Kg & 20 Kg & 240 Kg packing.



DURA BOND EP

Solvent free 100 % solid; two component epoxy based adhesive system. This material gives moderate working time @ 35 degree C, it rapidly cures to a rigid, tough material having excellent characteristics suitable for bonding. Available in 3 Kg packing.



CONSTRUCTION PRODUCTS



**DURA ALL PURPOSE PUTTY
DURA PRIME PS
DURA STUCCO FILLER**

**DURA CURBSTONE PAINT
DURA SOLVENT #1**

CONSTRUCTION PRODUCTS



DURA ALL PURPOSE PUTTY

Ready to use joint compound for a smooth, high-quality finish to gypsum wall panels. It is used for embedding reinforced tape, finishing gypsum panels joints, covering nail heads and metal corner beading.

Available in 5 Kg & 28 Kg packing.



DURA PRIME PS

Is a two component primer system recommended to use before Dura Seal PS application. It also provides a chemical bridge between the concrete surface and the sealant to aid adhesion.

Available in 1 Kg packing.



DURA STUCCO FILLER

ACRYLIC filler containing alkali resisting & smooth sand-able pigments & extenders, for the filling of surface irregularities and indentations, hairline surface cracks etc. It helps to produce a smooth and level surface prior to painting.

Available in 5 Kg & 28 Kg packing.



CONSTRUCTION PRODUCTS



DURA CURBSTONE PAINT

Dura Curbstone Paint is a two part epoxy based durable coating specifically designed for a high abrasion resistance. It is formulated for use as an interior protective coating on concrete surfaces. Resistant to mechanical abrasion, chemical and water. Available in 3 Kg packing.



DURA SOLVENT #1

General purpose cleaner for all epoxy products, can also be used as a thinner for solvent based products. Available in 5 Ltr & 20 Ltr packing.



RENDER & PLASTER PRODUCTS



DURA PLAST HSP-100
DURA PLAST HSP-200
DURA PLAST HSP-C

DURA PLAST
DURA PLAST FR
DURA PLAST FC

RENDER & PLASTER PRODUCTS



DURA PLAST HSP-100

Cement based dry mix rush coat for block surfaces consisting of OPC, quality enhancing additives and processed mineral aggregates. Applied on block surfaces to achieve mechanical key for plastering.

Available in 25 Kg packing.



DURA PLAST HSP-200

Cement based dry mix bond coat for fair face concrete surfaces consisting of OPC, quality enhancing additives and processed mineral aggregates. Applied on concrete surface to achieve mechanical key for plastering.

Available in 25 Kg packing.

DURA PLAST HSP-C

Cement based dry mix bond coat for very dense concrete and concrete containing SCMs (GGBS, Silica fumes, Fly Ash, Metkaolin etc.), Dura Plast HSP-C consists of quality enhancing polymer additives and processed mineral aggregates. Applied on concrete surfaces to achieve mechanical key for plastering.

Available in 25 Kg packing.



RENDER & PLASTER PRODUCTS



DURA PLAST

Polymer modified cement based dry mix plaster used for traditional plastering work in a clean and speedy manner. It consists of OPC, graded silica aggregates, sand, limestone and high content of special polymer additives; when mixed with water, it gives a thixotropic mortar suitable for plastering vertical and overhead surfaces. Dura Plast is applied by hand or machine for exterior and interior plastering work. Available in 25 Kg packing.



DURA PLAST FR

Polymer modified fiber reinforced cement based dry mix plaster used for traditional plastering work in a clean and speedy manner. It consists of OPC, graded silica aggregates, sand, limestone, high content of special polymer additives and fibers; when mixed with water, it gives a thixotropic mortar suitable for plastering vertical and overhead surfaces. Dura Plast FR is applied by hand or machine for exterior and interior plastering work. Available in 25 Kg packing.

DURA PLAST FC

Polymer modified cement based fairing and levelling mortar. It consists of OPC, fine aggregates and high content of special polymer additives; when mixed with water, it produces a high quality surface levelling mortar and pore filler for most concrete surfaces. Suitable for application to vertical and overhead surfaces. It can be applied at 0mm - 3mm thicknesses. Available in 20 Kg packing.



INTERNATIONAL SYSTEM OF MEASUREMENT



AQUASEAL
QATAR FACTORY W.L.L.

- Useful Conversion Factors
- Length Conversion Factors
- Area Conversion Factors
- Volume Conversion Factors
- Mass Conversion Factors
- Temperature Conversion Factors
- Power Conversion Factors
- Force Conversion Factors
- Pressure or Stress Conversion Factors

INTERNATIONAL SYSTEM OF MEASUREMENT



AQUASEAL
QATAR FACTORY W.L.L.

Useful Conversion Factors

Quantity	From English Units	To Metric Units	Multiply by*
Length			
	mile	km	1.609347
	yard	m	0.9144**
	foot	m	0.3048**
	inch	mm	25.40**
Area			
	square mile	km ²	2.590
	acre	m ²	4047
	acre	hectare	0.4047
	square yard	m ²	0.8361
	square foot	m ²	0.092 90
	square inch	mm ²	645.2
Volume			
	acre foot	m ³	1233
	cubic yard	m ³	0.7646
	cubic foot	m ³	0.028 32
	cubic foot	L(1000 cm ³)	28.32
	100 board feet	m ³	0.2360
	gallon	L (1000 cm ³)	3.785
Mass			
	lb	kg	0.4536
	kip (1000 lb)	metric ton (1000 kg)	0.4536
Mass/ unit length			
	plf	kg/m	1.488
Mass/unit area			
	psf	kg/m ²	4.882
Mass density			
	pcf	kg/m ³	16.02
Force			
	lb	N	4.448
	kip	kN	4.448
Force/ unit length			
	plf	N/m	14.59
	klf	kN/m	14.59
Pressure, stress, modules of elasticity			
	psf	Pa	47.88
	ksf	kPa	47.88
	psi	kPa	6.895
	ksi	MPa	6.895
Bending moment, torque, moment of force			
	ft-lb	N.m	1.356
	ft-kip	kN.m	1.356

* 4 significant digits

**denotes exact conversion

INTERNATIONAL SYSTEM OF MEASUREMENT



AQUASEAL
QATAR FACTORY W.L.L.

Quantity	From English Units	To Metric Units	Multiply by*
Moment of mass			
	lb.ft	kg.m	0.1383
Moment of inertia			
	lb.ft ²	kg.m ²	0.042 14
Second moment of area			
	in ⁴	mm ⁴	416 200
Section modulus			
	in ³	mm ³	16 390
Power			
	ton (refrig)	kW	3.517
	Btu/s	kW	1.054
	hp (electric)	W	745.7
	Btu/h	W	0.2931
Volume rate of flow			
	ft ³ /s	m ³ /s	0.028 32
	cfm	m ³ /s	0.000 471 9
	cfm	L/s	0.4719
	mgd	m ³ /s	0.0438
Velocity, speed			
	ft/s	m/s	**0.3048
Acceleration			
	f/s ²	m/s ²	0.3048
Momentum			
	lb.ft/sec	kg.m/s	0.1383
Angular momentum			
	lb.ft ² /s	kg.m ² /s	0.042 14
Plane Angle			
	degree	rad	0.017 45
		mrاد	17.45

* 4 significant digits

**denotes exact conversion

Length Conversion Factors

Length		
To Convert from	to	Multiply by
mile (US Statute)	kilometer (km)	1.609347
inch (in)	millimeter (mm)	25.4*
inch (in)	centimeter (cm)	2.54*
inch (in)	meter (m)	0.0254*
foot (ft)	meter (m)	0.3048*
yard (yd)	meter (m)	0.9144*

Area Conversion Factors

Area		
To Convert from	to	multiply by
square foot (sq.ft)	square meter (sq.cm)	0.09290304 E
square inch (sq.in)	square meter (sq.m)	0.00064516 E
square yard (sq.yd)	square meter (sq.m)	0.83612736 E
acre (ac)	hectare (ha)	0.4047

INTERNATIONAL SYSTEM OF MEASUREMENT



AQUASEAL
QATAR FACTORY W.L.L.

Volume Conversion Factors

Volume		
To convert from	to	multiply by
cubic inch (cu.in)	cubic meter (cu.m)	0.00001639
cubic foot (cu.ft)	cubic meter (cu.m)	0.02831685
cubic yard (cu yd)	cubic meter (cu.m)	0.7645549
U.S. liquid **		
gallon (gal)	cubic meter (cu m)	0.00378541
gallon (gal)	liter	3.785
fluid ounce (fl oz)	millimeters (ml)	29.57353
fluid ounce (fl oz)	cubic meter (cu m)	0.00002957

Mass Conversion Factors

Force		
To Convert from	to	multiply by
kil (1000 lb)	kilogram (kg)	453.6
kip (1000 lb)	newton (N)	4,448.222
pound (lb) avoirdupois	kilogram (kg)	0.4535924
pound (lb)	newton (N)	4.448222

Pressure or Stress Conversion Factors

Pressure or stress		
kip per square inch (ksi)	megapascal (Mpa)	6.894757
pound per square foot (psf)	kilogram per square meter (kg/sq m)	4.8824
pound per square foot (psf)	pascal (Pa)	47.88
pound per square inch (psi)	pascal (pa)	6.894.757
pound per square inch (psi)	megapascal (MPa)	0.00689476

Mass Conversion Factors

Mass (weight)		
pound (lb) avoirdupois	kilogram (kg)	0.4535924
ton, 2000 lb	kilogram (kg)	907.1848
grain	kilogram (kg)	0.0000648

Mass (weight) per length		
kip per linear foot (klf)	kilogram per meter (kg/m)	0.001488
pound per linear foot (plf)	kilogram per meter (kg/m)	1.488

Mass per volume (density)		
pound per cubic foot (pcf)	kilogram per cubic meter (kg/cu m)	16.01846
pound per cubic yard (lb/cu yd)	kilogram per cubic meter (kg/cu m)	0.5933

INTERNATIONAL SYSTEM OF MEASUREMENT



AQUASEAL
QATAR FACTORY W.L.L.

Temperature Conversion Factors

Temperature		
degree Fahrenheit (F)	degree Celsius (C)	$t_c = (t_F - 32) / 1.8$
degree Fahrenheit (F)	kelvin (K)	$t_k = (t_F + 459.7) / 1.8$
kelvin (k)	degree Celsius (C)	$t_c = t_k - 273.15$
Energy and heat		
British thermal unit (Btu)	joule (J)	1055.056
calorie (cal)	joule (J)	4.1868 E
Btu/ degree	Fx hr x ft ² W/m ² - degree K	5.678263
Kilowatt-hour (kwh)	joule (J)	3.600.000E
British thermal unit per pound (Btu/lb)	Calories per gram (cal/g)	0.55556
British thermal unit per hour	(But/hr)watt (W)	0.2930711

Power Conversion Factors

Power		
horepower (hp) (550 ft-lb/sec)	watt(w)	745.6999 E
Velocity		
mile per hour (mph)	kilometer per hour (km/hr)	1.60934
mile per hour (mph)	meter per second (m/s)	0.44704
Permeability		
darcy	centimeter per second (cm/sec)	0.000968
feet per day (ft/day)	centimeter per second (cm/sec)	0.000352

*indivates that the factor given is exact.

** One U.S. gallon equal 0.8327 Canadian gallon.

t--A pascal equals 1.000 newton per square meter.

Note:

One U.S. gallon water weighs 8.34 pounds (U.S.) at 60 degree F.

One cubic foot of water weighs 62.4 pounds (U.S)

One millilitor of water has a mass of 1 gram and has a volume of one cubic centimeter.

One U.S. bag of cement weighs 94 lbs.

NOTES



AQUASEAL
QATAR FACTORY W.L.L.



AQUASEAL
QATAR FACTORY W.L.L

Manufacturer of **DURABUILD™**



DURABUILD
QATAR

Aquaseal Qatar Factory W.L.L
T :+974 4467 8826 F :+974 4450 6819
info@aquaseal-qatar.com www.aquaseal-qatar.com

“Growth Through Innovation”